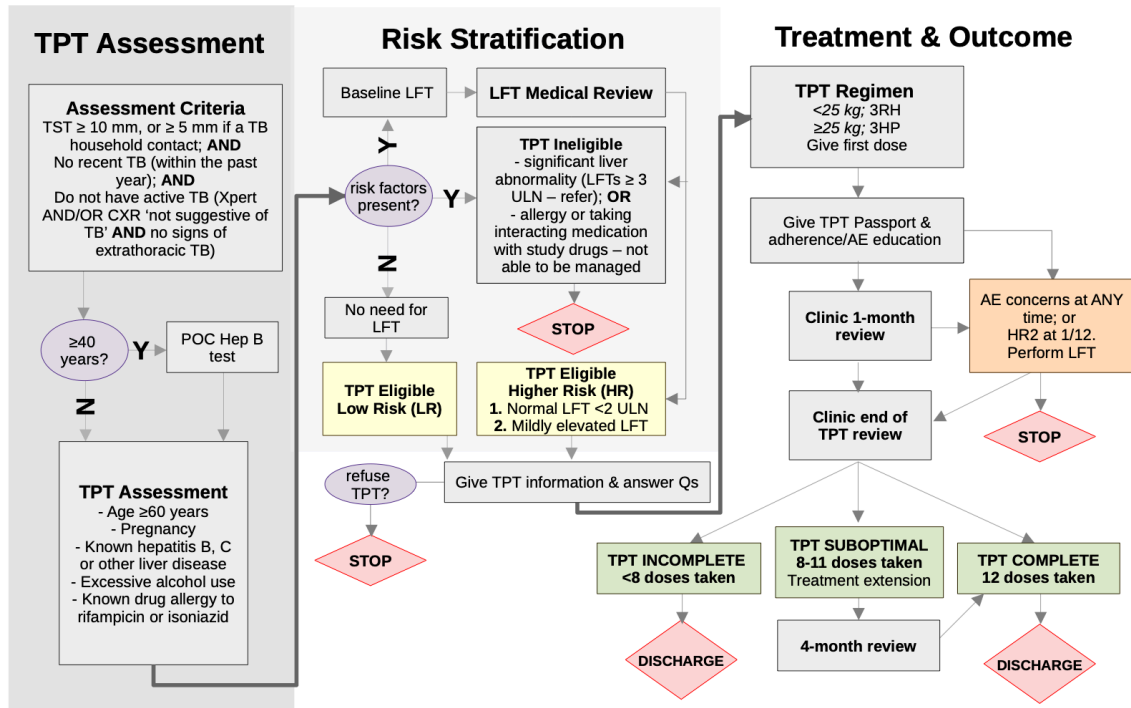


Figure S2. TB preventive Therapy (TPT) algorithm



3HP - 3-months weekly rifapentine and isoniazid; 3RH - 3-months daily rifampicin and isoniazid; AE - adverse event; CXR - chest X-ray; FU - follow-up; HR2 - higher risk group 2; LFT - liver function test; LTBI - latent TB infection; NTP - National TB Program; POC - point-of-care; TB - Tuberculosis; TPT - TB Preventive Treatment; TST - Tuberculin Skin Test; ULN - upper limit of normal